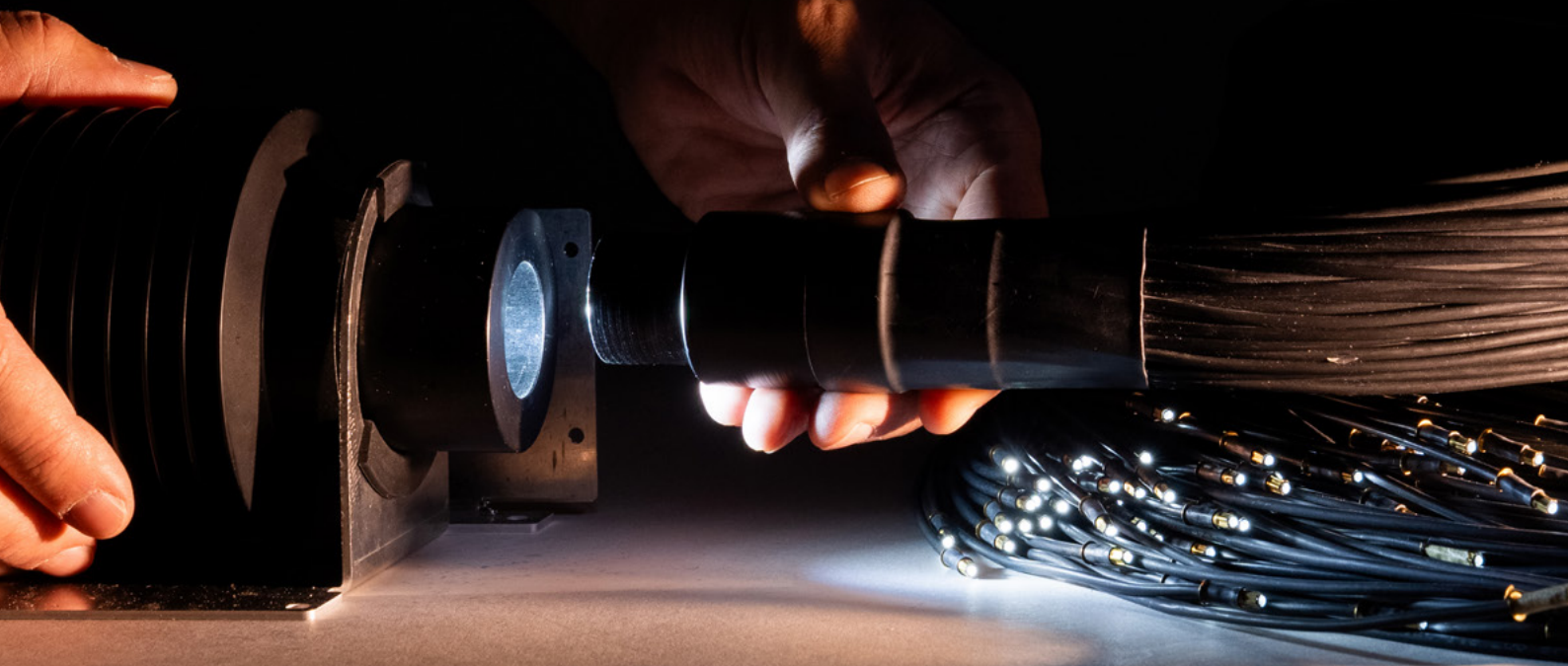
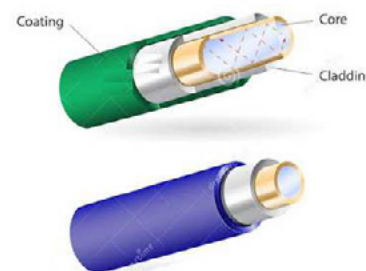


O. CREATIONS  
FIBER



# FIBER OPTICS LIGHT CABLES GLASS



## DESCRIZIONE GENERALE

### GENERAL DESCRIPTION

I cavi luminosi in fibra ottica (LKS) forniscono un metodo efficiente e flessibile per trasportare la luce da una sorgente LED esterna all'area di visualizzazione, garantendo al contempo prestazioni efficaci, resistenti e di lunga durata. È possibile combinare fino a diverse centinaia di punti luce per creare una miriade di schemi di illuminazione nei soffitti delle saune, nelle piscine o in elaborate vetrine.

Optical fiber light cables (LKS) provide an efficient and flexible method for transporting light from an external LED source to the display area, while ensuring effective, durable, and long-lasting performance. It is possible to combine several hundred light points to create a wide variety of lighting patterns in sauna ceilings, swimming pools, or elaborate showcases.

## CARATTERISTICHE

### FEATURES

Sottile e flessibile, in grado di resistere alle alte temperature e agli elevati livelli di umidità in ambienti difficili come le saune.

Thin and flexible able to withstand high temperatures and high levels of humidity in demanding environments such as saunas.

## VANTAGGI

### BENEFITS

Sicurezza ottimale degli oggetti illuminati, poiché le fibre di vetro trasmettono luce ma non elettricità. La trasmissione zero di calore significa che temperature della vetrina sono mantenute a un livello costante. Illuminare gli espositori senza dannosi raggi UV o IR. Adatto per l'installazione in spazi ristretti e angoli all'interno di vetrine, scaffali e pareti.

Optimal safety for illuminated objects as glass fibers transmit light but no electricity. Zero heat transference means showcase temperatures are kept at a consistent level. Illuminate displays without harmful UV or IR radiation. Suitable for installation in tight spaces and corners within showcases, shelves and walls

## TECHNICAL SPECIFICATIONS

SIZE	PART NO.	FIBER BUNDLER DIAMETER [MM (in)]	OUTER (CABLE) DIAMETER [MM (in)]	MINIMUM BENDING RADIUS [MM (in)]	MAXIMUM NUMBER OF FIBERS PER BUNDLE	SHEATING	OPERATION TEMPERATURE [°C (°F)]
3/4	561300173	1.0 (0.039)	2.2±0.10 (0.087±0.004)	5 (0.197)	500	HFFR compounds (halogen-free and flame-retardant. Fire class Eca) Hardness: Shore 45D (acc. to DIN 53505); color black (similar to RAL 9011) Compliant with European directive 2011/65/ EU including 2015/863/ EU REACH compliant	Common end face, glued: 0...+200 (+32...+392) flex sheathing -20... +70 (+4...+158)
1.3	1500116	1.3 (0.051)	2.2±0.10 (0.087±0.004)	8 (0.315)	320		
1.5	561330024	1.4 (0.055)	2.7±0.10 (0.106±0.004)	8 (0.315)	270		
3	561360154	2.0 (0.079)	3.85±0.15 (0.152±0.006)	15 (0.591)	130		
6	1500118	2.6 (0.102)	4.2±0.15 (0.165±0.006)	15 (0.591)	80		
8	561370139	3.0 (0.118)	4.85±0.15 (0.191±0.006)	20 (0.787)	60		
9	1500119	3.3 (0.130)	4.65±0.15 (0.183±0.006)	20 (0.787)	50		
14	561380086	4.0 (0.157)	6.35±0.15 (0.250±0.006)	25 (0.984)	33		
18	1127105	4.5 (0.177)	7.4±0.15 (0.291±0.006)	40 (1.575)	26		
24	561380078	5.8 (0.228)	8.7±0.3 (0.343±0.012)	50 (1.969)	16		
26	1500120	6.0 (0.236)	9.7±0.3 (0.382±0.012)	50 (1.969)	15		
36	561380131	7.3 (0.236)	9.7±0.3 (0.398±0.012)	60 (2.362)	10		



# FIBER OPTICS LIGHT CABLES PMMA

## FL SERIES END LIGHT NAKED FIBER



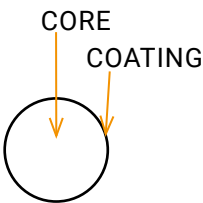
### COSTRUZIONE DELLA FIBRA FIBER CONSTRUCTION

### MATERIALE: PMMA MATERIAL: PMMA

### SPECIFICHE SPECIFICATIONS

- / End Light nuda è una fibra PMMA a singolo filamento, disponibile in un'ampia gamma di diametri per diverse applicazioni.
  - / Le fibre a emissione terminale sono ideali per cieli stellati, piscine, pareti decorative e altro ancora.
  - / Nessuna conduzione, nessun trasferimento di calore.
  - / Superficie della fibra ottica liscia, grande flessibilità, può essere piegata liberamente.
  - / Taglio personalizzato per soddisfare tutte le esigenze e gli scopi.
- End light naked fiber is a single strand PMMA fiber, available in a wider range of diameters for a variety of applications.
  - End emitting fibers are ideal for star ceiling, swimming pool, wallsapes and so on.
  - No conduction, no heat transfer
  - Optical fiber surface smooth, good flexibility, can be bent arbitrarily
  - Custom cut lenghts to suit all needs and purposes.

## PRODUCT LIST

Fiber construction	Model	Fiber OD (mm)	Roll Lenght (mm)	Max n° of fibers for bundle
	TX-FL0250-1	Ø 0.25	12000	7000
	TX-FL0500-1	Ø 0.5	6000	1900
	TX-FL0750-1	Ø 0.75	2700	800
	TX-FL01000-1	Ø 1.0	1500	450
	TX-FL01500-1	Ø 1.5	700	200
	TX-FL02000-1	Ø 2.0	350	115
	TX-FL02500-1	Ø 2.5	250	75
	TX-FL03000-1	Ø 3.0	150	50

## CC SERIES SINGLE CORE END LIGHT FIBER CABLE COVERED



### COSTRUZIONE DELLA FIBRA FIBER CONSTRUCTION

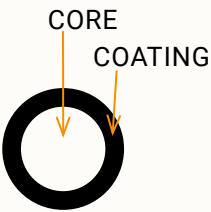
**MATERIALE: PMMA - RIVESTIMENTO: BLACK PE - CORE QTY: 1**

MATERIAL: PMMA - COVERED MATERIAL: BLACK PE - CORE QTY: 1

### SPECIFICHE SPECIFICATIONS

- / Il cavo End Light è rivestito con una guaina flessibile per una facile gestione e protezione della fibra.
- / Il cavo della serie di illuminazione adotta una struttura di guaina unica ed è facile da spelare.
- / I diversi diametri del cavo avranno effetti di luce differenti.
- End light cable is in a flexible jacket for ease of handling and fiber protection
- Lighting series cable adopts unique sheath structure and easy to strip
- Different diameters of cable will have different light effects

### PRODUCT LIST

Fiber construction	Model	Fiber OD (mm)	Fiber OD (mm)	Roll Length (mm)	Max n° of fibers for bundle
	TX-CC0500-1	Ø 0.5	Ø 1.0	1500	1900
	TX-CC0750-1	Ø 0.75	Ø 1.0 / Ø 2.2	2700	800
	TX-CC01000-1	Ø 1.0	Ø 1.8 / Ø 2.2	1500	450
	TX-CC01500-1	Ø 1.5	Ø 2.5	700	200
	TX-CC02000-1	Ø 2.0	Ø 3.0	350	115
	TX-CC02500-1	Ø 2.5	Ø 3.5	250	75
	TX-CC03000-1	Ø 3.0	Ø 4.0	150	50

## MULTI CORE STRAND END LIGHT FIBER CABLE



### COSTRUZIONE DELLA FIBRA FIBER CONSTRUCTION





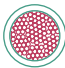

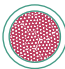
### MATERIALE: PMMA - RIVESTIMENTO: PVC (BIANCA O TRASPARENTE) - CORE QTY: MULTI CORE

MATERIAL: PMMA - COVERED MATERIAL: PVC (BLACK OR TRANSPARENT)  
- CORE QTY: MULTI CORE

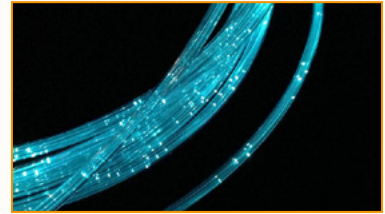
### SPECIFICHE SPECIFICATIONS

- / Fibre multifilamento in una guaina flessibile in PVC per una facile gestione e protezione della fibra.
- / Il cavo della serie di illuminazione adotta una struttura di guaina unica ed è facile da spelare.
- / I diversi diametri del cavo avranno effetti di luce differenti.
- Multistrand fibers in a flexible PVC jacket for ease of handling and fiber protection
- Lighting series cable adopts unique sheath structure and easy to strip
- Different diameters of cable will have different light effects

### PRODUCT LIST

Fiber construction	Model	Core Qty	Fiber OD (mm)	Cable OD (mm)	Roll Lenght (mm)	Max n° of fibers for bundle
	TX-FL0750-4	4	Ø 0.75	Ø 3.0	450	200
	TX-FL0750-7	7	Ø 0.75	Ø 4.0	450	110
	TX-FL0750-14	14	Ø 0.75	Ø 5.0	300	55
	TX-FL0750-25	25	Ø 0.75	Ø 6.0	100	32
	TX-FL0750-42	42	Ø 0.75	Ø 8.0	100	19
	TX-FL0750-75	75	Ø 0.75	Ø 12.0	100	10
	TX-FL0750-126	126	Ø 0.75	Ø 14.0	100	6

## SIDE-SPARKLE LIGHT FIBER CABLE



### COSTRUZIONE DELLA FIBRA FIBER CONSTRUCTION





#### MATERIALE: PMMA - RIVESTIMENTO: PVC TRASPARENTE - CORE QTY: 1 FILO O MULTI CORE

MATERIAL: PMMA - JACKET MATERIAL: TRANSPARENT PVC  
- CORE QTY: 1 STRAND OR MULTI CORE

### SPECIFICHE SPECIFICATIONS

- / Scoppi casuali di luce laterale creano un effetto scintillante.
- / Fibra multifilamento alloggiata in una guaina trasparente in PVC.
- / Perfetto per elementi decorativi come lampadari, fondali e tende.
- Randomised bursts of side-emitting light create a sparkle effect
- Multi-strand fiber housed in a clear PVC jacket
- Perfect for decorative features such as chandeliers, backdrops and curtains.

### PRODUCT LIST

Fiber construction	Model	Core Qty	Cable OD (mm)	Roll Length (mm)	Max n° of fibers for bundle
	TX- PFL0750-1	1*Ø 0.75	Ø 0.75	2700	500
	TX- PFL0750-3	3*Ø 0.75	Ø 3.0	450	260
	TX- PFL0750-4	4*Ø 0.75	Ø 3.5	450	200
	TX- PFL0750-7	7*Ø 0.75	Ø 4.0	450	110

\* Core qty can be customized according to customer requirements  
\* Common point distance: 10mm/15mm/30mm/40mm

## SIDE EMITTING SOFT LIGHT FIBER



## COSTRUZIONE DELLA FIBRA

FIBER CONSTRUCTION

## MATERIALE: MMA - RIVESTIMENTO: TEFLON BIANCO

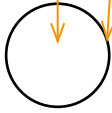
MATERIAL: MMA - COVERED MATERIAL: WHITE TEFLON

## SPECIFICHE

SPECIFICATIONS

- / Il cavo SideGlow può prolungare la durata del servizio luminoso.
- / Eccellente impermeabilità e resistenza alla fiamma.
- / Adatto per applicazioni decorative interne ed esterne.
- / Nessun calore o elettricità nel cavo.
- The sideglow cable can extend the light service life
- Excellent waterproof, flame retardant
- Suitable for interior and exterior decoration application
- No heat or electricity in the cable

## PRODUCT LIST

Fiber construction	Model	Inside diameter (mm)	Outer diameter (mm)	MOQ (m)	Tolerance (mm)	Light	Kg	Max n° of fibers for bundle
	TX-SFL-2000/1W	2	2	100	±0.20	Common/Super	0.6	115
	TX-SFL-3000/1W	3	3	100	±0.20	Common/Super	2	50
	TX-SFL-5000/1W	5	5	100	±0.20	Common/Super	3.5	18
	TX-SFL-6000/1W	6	6	100	±0.20	Common/Super	5	13
	TX-SFL-8000/1W	8	8	100	±0.20	Common/Super	5.5	6



## LASER FIBER

La fibra laser è un tipo speciale di fibra a emissione laterale, disponibile in un unico diametro di circa 1,2 mm e illuminabile solo tramite laser. I laser esistono nei colori rosso, verde e blu, ma non bianco; per ottenere una fibra laser bianca è necessaria una versione di fibra specifica.

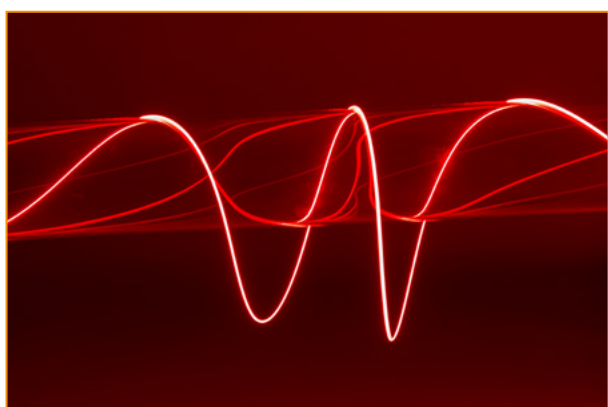
Nella variante RGB, questa tecnologia può raggiungere fino a 100 metri di illuminazione con soli due laser, mentre nella versione WHITE arriva fino a 30 metri. Pur consumando pochi watt, i laser utilizzati sono estremamente performanti.

Flessibile e adattabile, la fibra può essere inserita in tubi e profili di montaggio per applicazioni in ambienti critici ed è possibile creare bundle di più fibre per aumentarne la luminosità. Un prodotto unico, ideale per il settore nautico, architettuale e per applicazioni ad alta visibilità.

Laser fiber is a special type of side-emitting fiber, available in a single diameter of approximately 1.2 mm and can only be illuminated by a laser. Lasers come in red, green, and blue, but not white; to achieve a white laser fiber, a specific version is required.

In the RGB variant, this technology can reach up to 100 meters of illumination with just two lasers, while the WHITE version extends up to 30 meters. Despite consuming very little power, the lasers used are extremely high-performance.

Flexible and versatile, the fiber can be integrated into tubes and mounting profiles for use in critical environments, and multiple fibers can be bundled together to enhance brightness. A unique product, widely used in the nautical, architectural, and high-visibility application sectors.



SERIES

# COMPACT F.O. LIGHT SOURCE WHITE AND RGBW

## DESCRIZIONE GENERALE

I nostri illuminatori compatti a LED BIANCO per fibre ottiche vantano di numerosi punti di forza, elevata qualità della luce emessa grazie all'utilizzo di led Cree di ultima generazione con indice di resa cromatica (CRI) elevato >95 per una naturale resa dei colori delle superfici illuminate.

Alta efficienza energetica con rese oltre i 150 lm/W.

Grazie al Sistema ottico a doppia lente piano-convessa otteniamo totale riflessione interna e assenza di rifrazione che causerebbe perdita di lunghezze d'onda rosse con conseguente perdita di resa cromatica. Dissipazione passiva, totale assenza di ventole garantendo la completa silenziosità. Alimentatori on board compatibili con i più diffuse sistemi di dimmerazione. Le versioni RGBW montano led di elevate qualità realizzati su nostre specifiche con die Cree, il Sistema di ottiche miscelanti permette una perfetta omogeneità nell'emissione di colori composti come l'arancio il giallo il magenta il ciano etc.. L'ottica secondaria poi collima perfettamente il fascio luminoso per ottenere totale riflessione interna come nei modelli a luce bianca per il massimo della resa. I modelli condividono il sistema di dissipazione con le versioni a luce bianca, di conseguenza nessuna ventola e assoluta silenziosità. Alimentatori e sistemi di gestione colori remotati in scatole stagne con 1 mt di cavo, connettore DIN su richiesta, possibilità di interfacciamento con i più noti sistemi di gestione colori quali DMX, push, telecomando, disponibili anche touch panel da installare a parete. Tutti i modelli sono disponibili IP67 su richiesta.

## GENERAL DESCRIPTION

Our WHITE LED compact fibre optic illuminators boast numerous strengths, high quality of light emitted thanks to the use of the latest generation of Cree LEDs with high colour rendering index (CRI) >95 for natural colour rendering of illuminated surfaces. High energy efficiency with yields over 150 lm/W. Thanks to the double plane-convex lens optical system we obtain total internal reflection and absence of refraction that would cause loss of red wavelengths with consequent loss of colour rendering. Passive dissipation, total absence of fans ensuring complete silence.

On-board power supplies compatible with the most common dimming systems. The RGBW versions are fitted with high quality LEDs made to our specifications with Cree die, the mixing optics system allows perfect homogeneity in the emission of composite colours such as orange, yellow, magenta, cyan, etc.

The secondary optics then perfectly collimate the light beam to obtain total internal reflection as in the white light models for maximum yield. The models share the dissipation system with the white light versions, so no fan and absolute silence.

Power supplies and remote colour management systems in watertight boxes with 1 m cable, DIN connector on request, possibility of interfacing with the most popular colour management systems such as DMX, push, remote control, also available touch panels for wall mounting.

# COMPACT F.O. LIGHT SOURCE SMALL WHITE

## DESCRIPTION

**PRODUCER:** O.Creations Srl

**OC ITEM CODE:** FOLS-WHITE-SMALL

## GENERAL SPECIFICATIONS

**TYPE:** Fiber Optic Light Source

**PORT CONNECTOR SIZE** Ø30 mm

**FIBRE TYPE** PMMA / Glass

**DIMENSIONS:** 190 x 150 x H92mm

**WEIGHT APPROX.:** 1.20 Kg

**MATERIAL:** Aluminium - Anodized Black

**IP RATING:** IP40 - Upon request IP67

**ENVIROMENTAL:** Indoor/Outdoor

**COMPLIANCE:** CE Class II

**AMBIENT TEMPERATURE** -10°C to 40°C

## ELECTRICAL SPECIFICATIONS

**INPUT SPECIFICATION (MAIN-CC-CV):** 100-240Vac 50/60Hz

**THERMAL PROTECTION** NTC Thermistor

**COOLING SYSTEM** Natural Convection

## LED SPECIFICATIONS

**LIGHT SOURCE:** CREEled

**LED CONSUMPTION:** 25W

**CCT:** 3000k/4000k/5000k

**CRI:** >90

**LED LUMINOUS FLUX:** 2640lm (30k) / 2840lm (40k) / 3040 (50k)

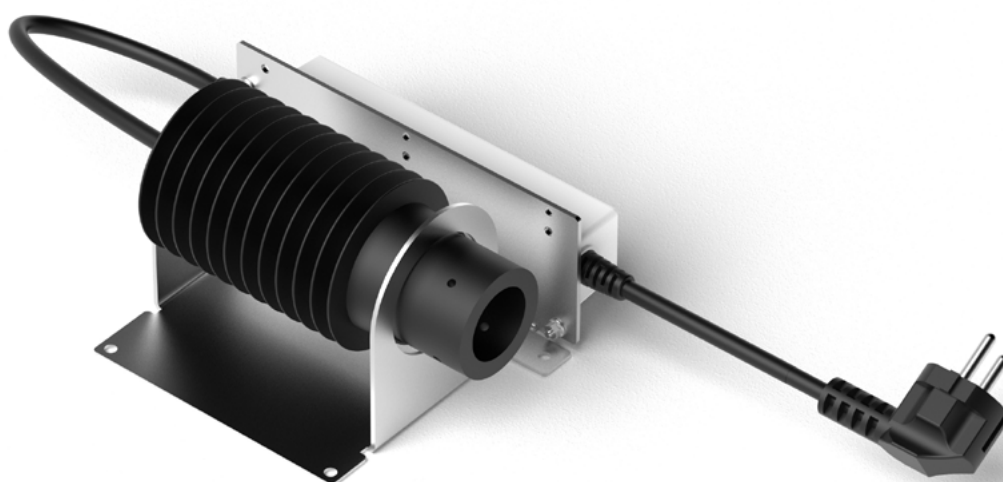
**LED LIFETIME (L80)** 50,000 hours

**LED DRIVER LIFETIME** 50,000 hours (@ Tc 75°C at 80% load)

## CONTROL SPECIFICATIONS

**DRIVER INCLUDED:** Yes, On-Off

**DIMMER SYSTEM:** 1-10V, PWM, Resistance, Push, DALI, DMX upon request



# COMPACT F.O. LIGHT SOURCE SMALL RGBW

## DESCRIPTION

**PRODUCER:** O.Creations Srl

**OC ITEM CODE:** FOLS-RGBW-SMALL

## GENERAL SPECIFICATIONS

**TYPE:** Fiber Optic Light Source

**PORT CONNECTOR SIZE** Ø30 mm

**FIBRE TYPE** PMMA / Glass

**DIMENSIONS:** 190 x 150 x H92mm

**WEIGHT APPROX.:** 1.20 Kg

**MATERIAL:** Aluminium - Anodized Black

**IP RATING:** IP40 - Upon request IP67

**ENVIROMENTAL:** Indoor/Outdoor

**COMPLIANCE:** CE Class II

**AMBIENT TEMPERATURE** -10°C to 40°C

## ELECTRICAL SPECIFICATIONS

**INPUT SPECIFICATION (MAIN-CC-CV):** 100-240Vac 50/60Hz

**THERMAL PROTECTION** NTC Thermistor

**COOLING SYSTEM** Natural Convection

## LED SPECIFICATIONS

**LIGHT SOURCE:** Led Engine LZC

**LED CONSUMPTION:** 4x10W

**CCT:** White 5000k

**CRI:** >90

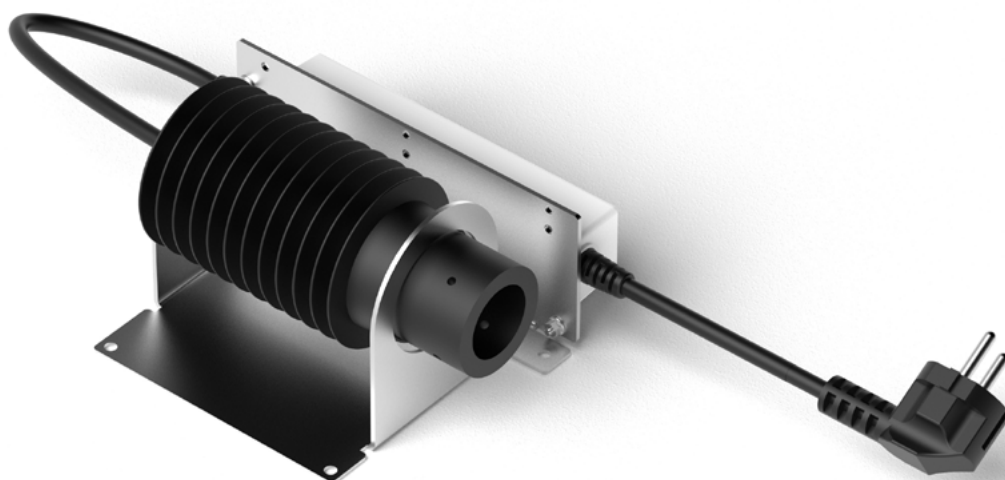
**LED LIFETIME (L80)** 50,000 hours

**LED DRIVER LIFETIME** 50,000 hours (@ Tc 75°C at 80% load)

## CONTROL SPECIFICATIONS

**DRIVER INCLUDED:** Yes

**DIMMER SYSTEM:** DMX, DALI, PUSH, RF remote control upon request



# COMPACT F.O. LIGHT SOURCE BIG WHITE

## DESCRIPTION

**PRODUCER:** O.Creations Srl

**OC ITEM CODE:** FOLS-BIG-WHITE

## GENERAL SPECIFICATIONS

**TYPE:** Fiber Optic Light Source

**PORT CONNECTOR SIZE** Ø30 mm

**FIBRE TYPE** PMMA / Glass

**DIMENSIONS:** 190 x 150 x H110mm

**WEIGHT APPROX.:** 1.80 Kg

**MATERIAL:** Aluminium - Anodized Black

**IP RATING:** IP40

**ENVIROMENTAL:** Indoor

**COMPLIANCE:** CE Class II

**AMBIENT TEMPERATURE** -10°C to 40°C

## ELECTRICAL SPECIFICATIONS

**INPUT SPECIFICATION (MAIN-CC-CV):** 100-240Vac 50/60Hz

**THERMAL PROTECTION** NTC Thermistor

**COOLING SYSTEM** Natural Convection

## LED SPECIFICATIONS

**LIGHT SOURCE:** CREEled

**LED CONSUMPTION:** 45W

**CCT:** 3000k/4000k/5000k

**CRI:** >90

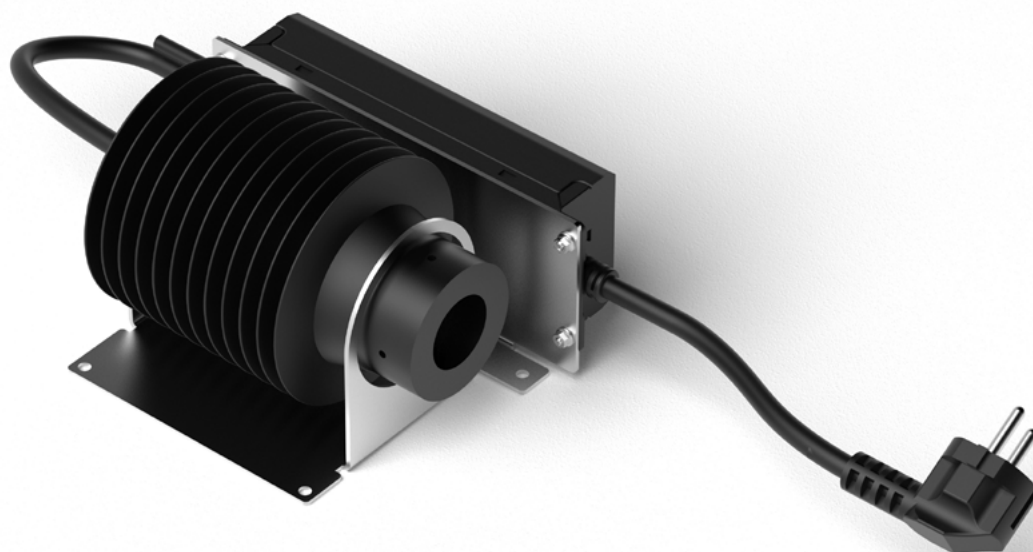
**LED LIFETIME (L80)** 50,000 hours

**LED DRIVER LIFETIME** 50,000 hours (@ Tc 75°C at 80% load)

## CONTROL SPECIFICATIONS

**DRIVER INCLUDED:** Yes, on-off

**DIMMER SYSTEM:** 1-10V, PWM, Resistance, Push, DALI, DMX upon request



# COMPACT F.O. LIGHT SOURCE BIG RGBW

## DESCRIPTION

**PRODUCER:** O.Creations Srl

**OC ITEM CODE:** FOLS-BIG-RGBW

## GENERAL SPECIFICATIONS

**TYPE:** Fiber Optic Light Source

**PORT CONNECTOR SIZE** Ø30 mm

**FIBRE TYPE** PMMA / Glass

**DIMENSIONS:** 190 x 150 x H110mm

**WEIGHT APPROX.:** 1.80 Kg

**MATERIAL:** Aluminium - Anodized Black

**IP RATING:** IP40

**ENVIROMENTAL:** Indoor

**COMPLIANCE:** CE Class II

**AMBIENT TEMPERATURE** -10°C to 40°C

## ELECTRICAL SPECIFICATIONS

**INPUT SPECIFICATION (MAIN-CC-CV):** 100-240Vac 50/60Hz

**THERMAL PROTECTION** NTC Thermistor

**COOLING SYSTEM** Natural Convection

## LED SPECIFICATIONS

**LIGHT SOURCE:** Custom power Led COB

**LED CONSUMPTION:** 4x20W

**CCT:** White 3000k, 4000k/5000k upon request

**CRI:** >90

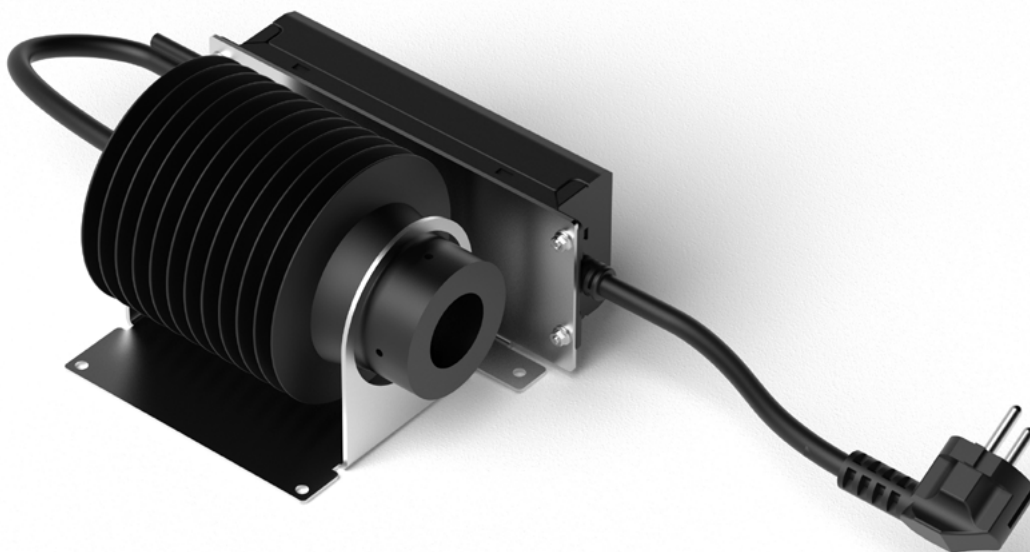
**LED LIFETIME (L80)** 50,000 hours

**LED DRIVER LIFETIME** 50,000 hours (@ Tc 75°C at 80% load)

## CONTROL SPECIFICATIONS

**DRIVER INCLUDED:** Yes

**DIMMER SYSTEM:** DMX, DALI, PUSH, RF remote control upon request





# F.O. LIGHT SOURCE POWER SERIES

## DESCRIZIONE GENERALE

I nostri illuminatori della serie POWER a luce bianca sono stati progettati per sostituire in modo eccellente le vecchie fonti di luce a scarica. Queste ultime, sebbene altamente performanti, presentavano numerosi svantaggi, tra cui un'elevata rumorosità, una durata limitata delle sorgenti luminose e un costo elevato. Le nuove fonti di luce di ultimissima generazione, sviluppate ad hoc per questa applicazione e prodotte in esclusiva, garantiscono, in combinazione con un gruppo ottico in vetro composto da tre lenti piano-convesse, una resa luminosa superiore alle aspettative, assicurando al contempo il rispetto e il mantenimento nel tempo delle performance qualitative dello spettro luminoso.

Grazie all'impiego di ventole brushless a bassa tensione, la rumorosità è ridottissima. L'ingombro è estremamente contenuto grazie a un'attenta progettazione curata dal nostro team di ingegneri interni. Questa gamma, tipicamente utilizzata per applicazioni tecniche in abbinamento con fibra vetrosa di grosso diametro, è ideale per l'illuminazione d'accento. Trova impiego in settori come teche museali, esposizioni di gioielleria e orologeria, oltre ad applicazioni industriali specifiche, tra cui visori o illuminatori anulari per microscopi.

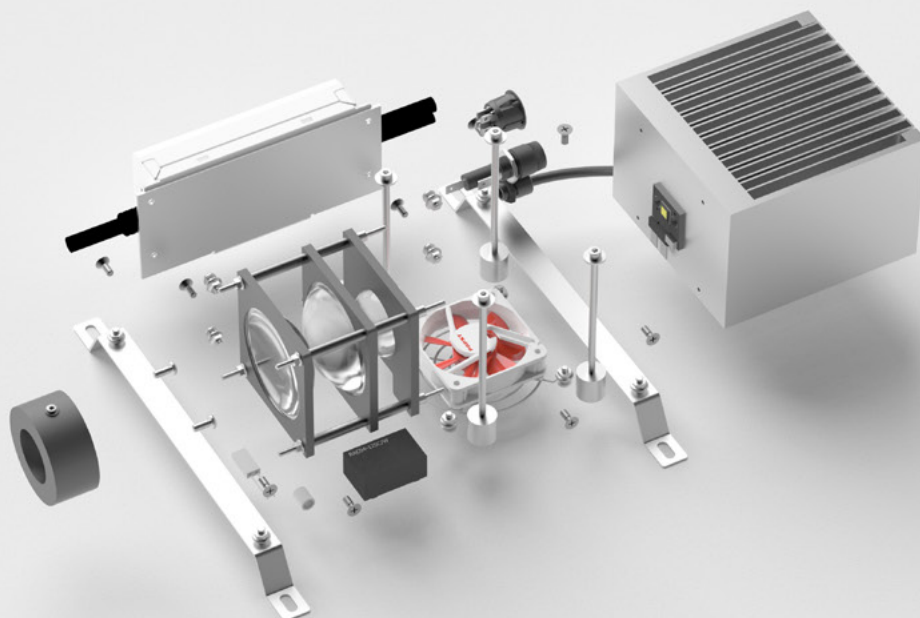
## GENERAL DESCRIPTION

Our POWER series white light illuminators have been designed to excellently replace old 150W discharge light sources. While highly efficient, these older sources had numerous drawbacks, including high noise levels, limited lifespan, and high costs.

The latest-generation light sources, specifically developed for this application and produced exclusively, ensure, in combination with a glass optical unit composed of three plano-convex lenses, a luminous output that exceeds expectations while maintaining and guaranteeing the qualitative performance of the light spectrum.

Thanks to the use of low-voltage brushless fans, noise levels are significantly reduced. Compact dimensions are achieved through meticulous engineering by our in-house team of designers.

This range, typically used for technical applications in combination with large-diameter fiberglass, is ideal for accent lighting. It is commonly employed in sectors such as museum display cases, jewelry and watch exhibitions, as well as specific industrial applications, including vision systems or ring illuminators for microscopes.



# POWER F.O. LIGHT SOURCE WHITE POWER 100

## DESCRIPTION

**PRODUCER:** O.Creations Srl

**OC ITEM CODE:** FOLS-WHITE-POWER100

## GENERAL SPECIFICATIONS

**TYPE:** Fiber Optic Light Source

**PORT CONNECTOR SIZE** Ø30 mm

**FIBRE TYPE** PMMA / Glass

**DIMENSIONS:** IP40: 275 x 195 x H125mm - IP65: 400x300x H200mm

**WEIGHT APPROX.:** IP40: 2.10 Kg - IP65: 3.10 Kg

**MATERIAL:** IP40: Aluminium - Powder coated Black - IP65: Grp polystere

**IP RATING:** IP40 - IP65 Upon request

**ENVIROMENTAL:** Indoor/Outdoor

**COMPLIANCE:** CE Class I

**AMBIENT TEMPERATURE** -10°C to 40°C

## ELECTRICAL SPECIFICATIONS

**INPUT SPECIFICATION (MAIN-CC-CV):** 100-240Vac 50/60Hz

**THERMAL PROTECTION** NTC Thermistor

**COOLING SYSTEM** IP40: Ebm-paspt 60mm - 16dB - IP65: Sunon 120mm - 46dB

## LED SPECIFICATIONS

**LIGHT SOURCE:** Custom Design power Led

**LED CONSUMPTION:** 92W (30k) - 68W (40k) - 80W (50k)

**CCT:** White 3000k, 4000k, 5000k

**CRI:** >90

**LED LUMINOUS FLUX:** 5750lm (30k) / 3600lm (40k) / 4900 (50k)

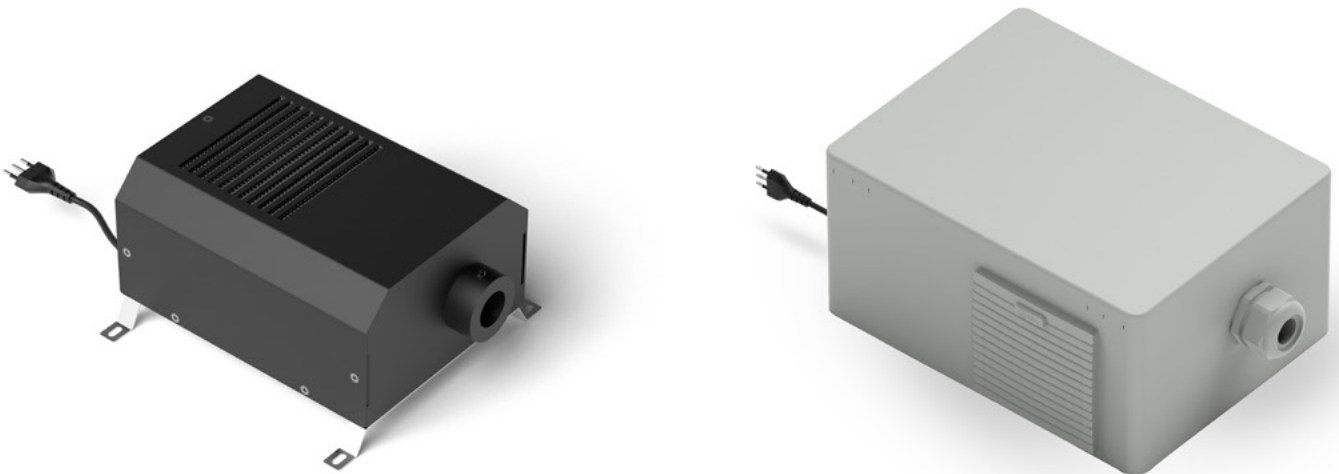
**LED LIFETIME (L80)** 50,000 hours

**LED DRIVER LIFETIME** 50,000 hours (@ Tc 75°C at 80% load)

## CONTROL SPECIFICATIONS

**DRIVER INCLUDED:** Yes

**DIMMER SYSTEM:** 1-10V, PWM, Resistance (Push, DALI, DMX upon request)





# COMPACT F.O. LIGHT SOURCE WHITE POWER 150

## DESCRIPTION

**PRODUCER:** O.Creations Srl

**OC ITEM CODE:** FOLS-WHITE-POWER150

## GENERAL SPECIFICATIONS

**TYPE:** Fiber Optic Light Source

**PORT CONNECTOR SIZE** Ø30 mm

**FIBRE TYPE** PMMA / Glass

**DIMENSIONS:** 275 x 265 x H145mm

**WEIGHT APPROX.:** 2.10 Kg

**MATERIAL:** IP40: Aluminium - Powder coated Black

**IP RATING:** IP40

**ENVIROMENTAL:** Indoor

**COMPLIANCE:** CE Class I

**AMBIENT TEMPERATURE** -10°C to 40°C

## ELECTRICAL SPECIFICATIONS

**INPUT SPECIFICATION (MAIN-CC-CV):** 100-240Vac 50/60Hz

**THERMAL PROTECTION** NTC Thermistor

**COOLING SYSTEM** Sunon 92mm 28dB

## LED SPECIFICATIONS

**LIGHT SOURCE:** Custom Design power Led

**LED CONSUMPTION:** 150W

**CCT:** White 3000k, 4000k, 5000k

**CRI:** >80

**LED LUMINOUS FLUX:** 8000lm (30k) / 9000lm (40k) / 10000 (50k)

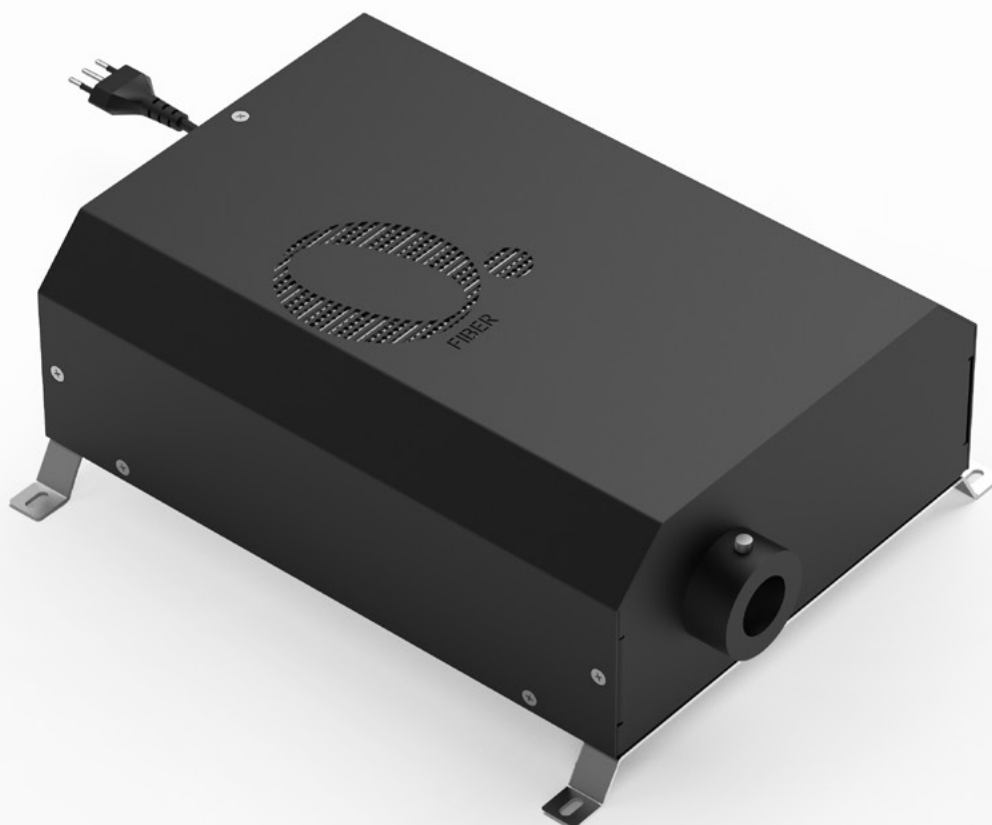
**LED LIFETIME (L80)** 50,000 hours

**LED DRIVER LIFETIME** 50,000 hours (@ Tc 75°C at 80% load)

## CONTROL SPECIFICATIONS

**DRIVER INCLUDED:** Yes

**DIMMER SYSTEM:** DMX, 0-10V, DALI upon request



# COMPACT F.O. LIGHT SOURCE RGBW POWER 250

## DESCRIPTION

**PRODUCER:** O.Creations Srl

**OC ITEM CODE:** FOLS-RGBW-POWER250

## GENERAL SPECIFICATIONS

**TYPE:** Fiber Optic Light Source

**PORT CONNECTOR SIZE** Ø30 mm

**FIBRE TYPE** PMMA / Glass

**DIMENSIONS:** 375 x 265 x H145 mm

**WEIGHT APPROX.:** 2.80 Kg

**MATERIAL:** Aluminium - Powder coated Black

**IP RATING:** IP40

**ENVIROMENTAL:** Indoor use only

**COMPLIANCE:** CE Class I

**AMBIENT TEMPERATURE** -10°C to 40°C

## ELECTRICAL SPECIFICATIONS

**INPUT SPECIFICATION (MAIN-CC-CV):** 100-240Vac 50/60Hz

**THERMAL PROTECTION** NTC Thermistor

**COOLING SYSTEM** Sunon 92mm - 28dB

## LED SPECIFICATIONS

**LIGHT SOURCE:** Custom Design Power Led

**LED CONSUMPTION:** 200W

**CCT:** RGB + White 6500K

**CRI:** >90

**LED LUMINOUS FLUX:** 860lm (R) / 1800lm (G) / 380 (B) / 3400lm (W)

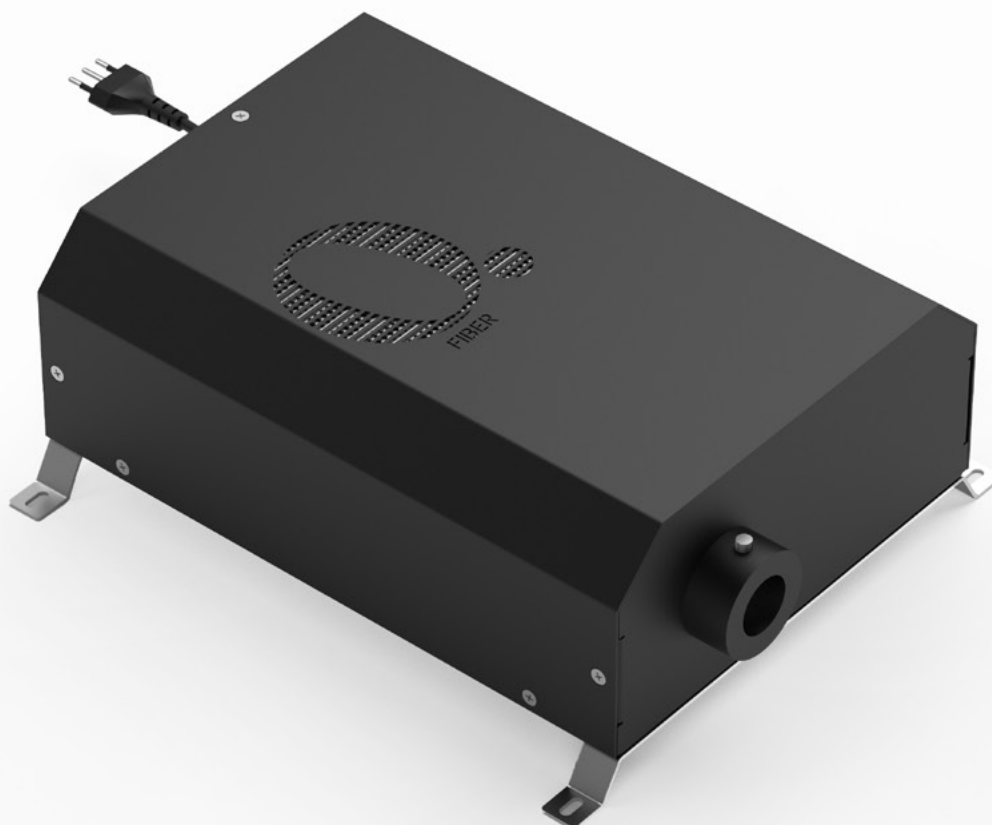
**LED LIFETIME (L80)** 50,000 hours

**LED DRIVER LIFETIME** 50,000 hours (@ Tc 80°C at 80% load)









## CONTROL SPECIFICATIONS

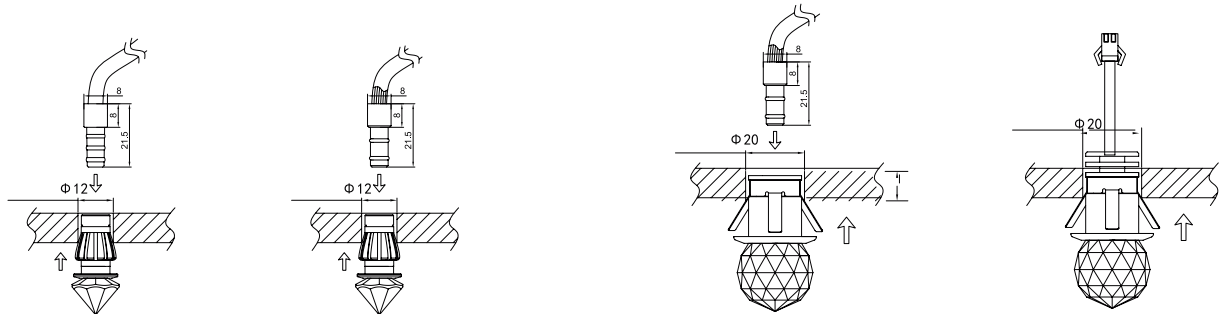
**DRIVER INCLUDED:** Yes, dim DMX

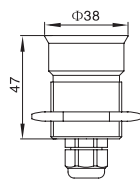
**DIMMER SYSTEM:** DALI upon request



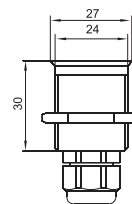
# ACCESSORIES

 <p>EP-011</p>	 <p>EP-012</p>
 <p>EP-013</p>	 <p>EP-014</p>
 <p>EP-015</p>	 <p>EP-018</p>
 <p>EP-017</p>	 <p>EP-063</p>

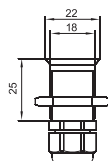




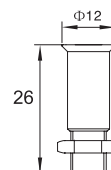
EP-023



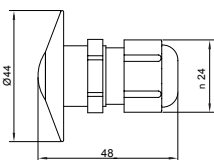
EP-024



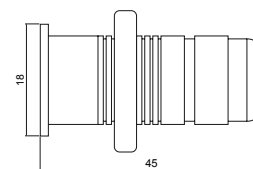
EP-026



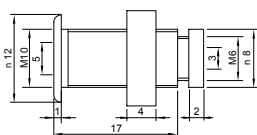
EP-025



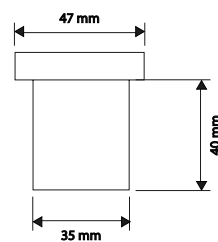
EP-029



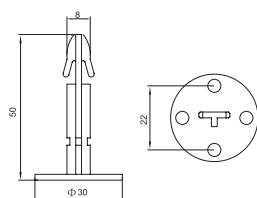
EP-030  
SUS 316















EP-031  
SUS 316



EP-033  
SUS 316

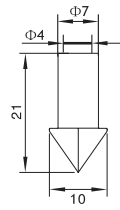


EP-071

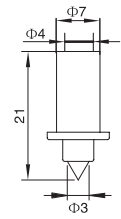
 <p>EP-041</p>	 <p>EP-042</p>
 <p>EP-043</p>	 <p>EP-044</p>
 <p>EP-045</p>	 <p>EP-046</p>
 <p>EP-051</p>	 <p>EP-052</p>
 <p>EP-053</p>	 <p>EP-056</p>
 <p>EP-055</p>	 <p>EP-054</p>



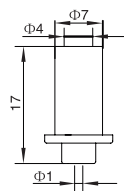
EP-031



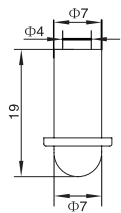
EP-032



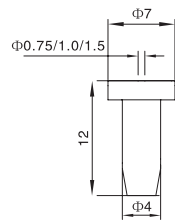
EP-033



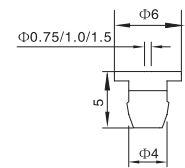
EP-034



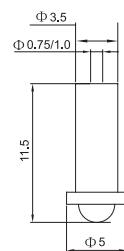
EP-035



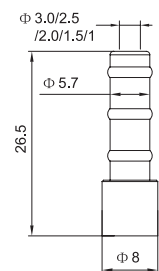
EP-036



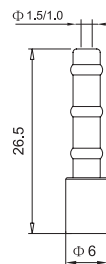
EP-037



EP-038

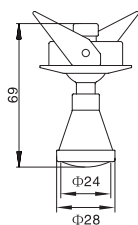


EP-039

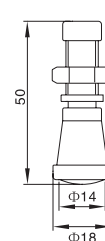




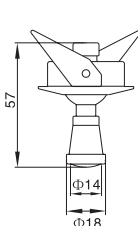
EP-001



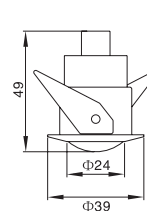
EP-006



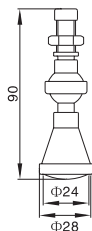
EP-002



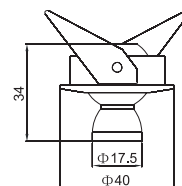
EP-007



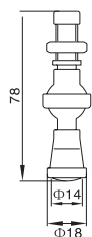
EP-003



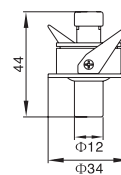
EP-009



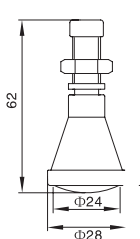
EP-004



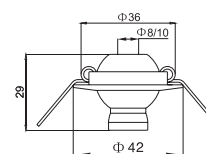
EP-010

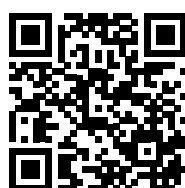


EP-005



EP-127





**O. CREATIONS S.R.L.**

Via Dell'Artigianato, 22  
35020 Due Carrare  
Padova, Italia

**[www.ocreations.it](http://www.ocreations.it)**

[info@ocreations.it](mailto:info@ocreations.it)

+39 049 8670539

O'CREATIONS S.R.L. IS A BRAND OF

**STARLIGHT**

light in your hands